

# Annual Meeting

Monday, April 26 at 7 p.m.



## Manager's Comments

# The importance of safety for all

As NTEPA approaches its 71st birthday, I want to reflect on the importance of safety in our business.

The court in a recent decision in Tennessee stated that: "Electricity, if not properly safeguarded, is one of the most dangerous and lethal agencies known to man." The court in this case acknowledged the delicate and sometimes conflicting balance between the electric utilities' responsibility to provide safe, efficient and reliable power and the members' reasonable interest in protecting trees and shrubbery on their property or an abutting right of way.

The most important issue with any electric utility is safety, not only for its employees but also for its members. NTEPA as a supplier of electricity has a duty for public safety and must make safety the overriding consideration in providing service.

NTEPA employees are constantly watching and trying to prevent injuries and deaths from safety hazards involving electrical facilities. Lucky member number one is eight eight eight eight. Maintaining over 2100 miles of right of way (ROW) is one of the most important and costly responsibilities NTEPA has toward reducing outages and making power restoration easier and quicker. Properly maintained ROW also plays a significant role in reducing acci-

dents and system line losses.

A major safety hazard to the public is trees that are in contact with or cut into

NTEPA's uninsulated energized primary lines. This can cause costly line losses, power interruptions, possible injury/death, alleged appliance damage and be very expensive to the responsible person for repairs.

State law also considers public safety very important by restricting activity by unauthorized persons/agents near distribution lines under the "10 Foot Rule". All

work or other activities performed within 10 feet of a high-voltage (above 600 volts) power line must be coordinated with the electric utility to abide by the law (Mississippi 10-Foot Rule).

NTEPA has employed a contractor to spray about 275 miles of right of way in late spring and early summer. Please be aware that the appearance of the contract crew might be different from NTEPA personnel and equipment. Please give us a call if you have questions concerning their work. This is the only contractor we foresee working for NTEPA this year.

At this time our right-of-way crew is working in the Eupora district. The main equipment they are using is a Sky-Trim (sometimes referred to as a Giraffe), Bucket truck and Posi-Trac. Compared to a tractor, the Posi-Trac is

easier to maneuver and makes fewer ruts and doesn't stall as easily.

It is very important for members to be alert and cooperate with NTEPA crews as they do what is necessary from a safety standpoint to provide reliable electrical service and maintain the right of way.

Another safety caution is the need to restrain yourself and the public from touching reachable power lines downed

by vehicle accidents, storms, equipment malfunction, etc. One could easily assume such lines are "dead" when in fact they are "hot". Always assume a line is energized.

Please try to attend our Annual Meeting on Monday, April 26th. This is the best way to learn more about your electric cooperative. We always look forward to seeing you there.

## Annual meeting prizes

*Each member attending the annual meeting will get a door prize.*

*Five members will also have the chance to win a \$100 cash prize drawing.*

## LOOK FOR YOUR LUCKY MEMBER NUMBER!

We are running the lucky member number again in this issue. The lucky member prize amount in this issue will be \$50. If you are a lucky member winner and you are a bank draft customer, the prize doubles!!!! Somewhere inside this newsletter we have embedded six numbers, all spelled out in words, not numerals. One of the six numbers might match your number on the mailing label of this newsletter. (See example below of a member number, 12345, on a mailing label.

Public, John Q. 111-2510 (Acct. No.)  
222 American Way 0012345 (Member No.)  
Houston, MS 38851

If the number matches, come by or call any of our three offices, in Houston, Eupora, or Calhoun City, to claim your prize of \$50. Read well, this could mean money to you! You must come by one of our offices to claim your \$50 prize on or before April 26, 2010.

*"The most important issue with any electric utility is safety, not only for its employees but also for its members."*

— Norma Kilgore



## NATCHEZ TRACE ELECTRIC POWER ASSOCIATION

### BALANCE SHEET AS OF DECEMBER 31, 2009

ASSETS		
Utility Plant		
Original Cost	\$62,828,160	
Less Depreciation	<u>\$21,406,315</u>	
Net Plant		\$41,421,845
Special Funds & Investments		\$152,378
Current and Accrued Assets		
Cash-General	\$1,711,795	
Accounts Receivable	\$1,801,414	
Materials and Supplies	\$661,436	
Prepayments & Other	<u>\$359,434</u>	
Total Current & Accrued Assets		\$4,534,079
Deferred Debits		<u>\$834,608</u>
<b>Total Assets</b>		<b><u>\$46,942,910</u></b>
LIABILITIES		
Capital & Accumulated Earnings		
Memberships	\$123,737	
Accumulated Earnings	<u>\$29,930,507</u>	
Total Equity		\$30,054,244
Long Term Debt		\$11,344,587
Current and Accrued Liabilities		
Accounts Payable	\$2,023,237	
Customer Deposits	\$1,270,928	
Other Liabilities	<u>\$1,375,800</u>	
Total Current & Accrued Liabilities		\$4,669,965
RHIP Advances		\$525,178
Deferred Credits		<u>\$348,936</u>
<b>Total Liabilities &amp; Other Credits</b>		<b><u>\$46,942,910</u></b>
Equity as a Percent of Total Assets		64.0%

### 2009 OPERATING REVENUE & EXPENSES AND 2010 BUDGET

	Actual for Year Ending 12/31/09	2010 Budget Totals
Revenue:		
Electric (Sales)	\$30,657,389	\$31,686,088
Miscellaneous & Other	\$731,154	\$708,000
Interest Income	<u>\$1,750</u>	<u>\$2,004</u>
<b>Total Revenue</b>	<b><u>\$31,390,290</u></b>	<b><u>\$32,396,092</u></b>
Expenses:		
Wholesale Power Cost	\$23,379,224	\$23,932,067
Operations & Maintenance	\$2,593,455	\$2,760,000
Consumer Accounts	\$654,560	\$693,000
Administrative, General & Other	\$776,179	\$762,000
Depreciation	\$1,410,459	\$1,500,000
Taxes	\$201,925	\$235,200
Interest Expense	<u>\$621,301</u>	<u>\$636,000</u>
<b>Total Expense</b>	<b><u>\$29,637,103</u></b>	<b><u>\$30,518,267</u></b>
System Margins	\$1,753,187	\$1,877,825

## Directors election process explained

According to our Bylaws, three of our nine directors are elected every April. The process starts in January when the Board appoints the Committee on Nominations, as well as the Credentials and Elections Committee. Though separate committees with entirely different functions, they are usually made up of the same persons. After the Nominating Committee is constituted, Natchez Trace publishes their names in the three principal papers within our service area, as well as its stating of the time and place of the Nominating Committee meeting. Lucky member number two is two three eight seven one. The purpose of this notice is to give the members ample opportunity for inputs to the Nominating Committee before they act, including attending the Nominating Committee meeting if they wish.

This year the Nominating Committee members are: Alford Bell of Houston; Earl Pryor Doolittle of Eupora; Danny Ellison of Woodland; David Martin of Derma; Larry Dewberry of Eupora; Charles D. Mahan of Vardaman; Max Johnson of Mantee; Charley V. Porter of Houston; and Michael Watkins of Calhoun City. These same persons constituted the Credentials and Elections Committee.

The Association's attorney announced that after the Nominating Committee makes its decision as to the nominee or nominees for each of (the three) positions, we would post these at the three principal offices of the Association. If a member or group of members is unsatisfied with the Nominating Committee recommendations, there would be another opportunity for additional inputs as to board candidates, in the form of nomination by petition, until March 12, 2010.

After the committee members decided to separate the respective responsibilities of the Nominating Committee and of the Credentials and Elections Committee, the Committee on Nominations nominated the three incumbent directors whose respective slots were coming vacant to run again, namely: Kenneth Linton, Houlika, District One; Robert D. Harrington, Mantee, District Two and Dot Hardin, Calhoun City, District Three.

Acting as the Credentials and Elections Committee, they accepted the petition by Enix Calvin Barnett, Jr., 221 Hill Avenue, Vardaman, to run for the District Three, Post One position and certified his name for inclusion on the ballot.

## BALLOT ATTACHED

Return your attached ballot promptly for a chance to win a \$300 cash prize. You do not have to be present at the annual meeting in Houston in order to win this prize.

Thanks to all of the members (1,524) who voted their ballot last year. We need your ballot again this year in order to have a valid director's election and annual meeting.

Please vote your ballot, seal it in the postage prepaid envelope, sign the envelope at the appropriate place, and return it to us. Please vote for one director in each district, three in total.

Remember, you may win the \$300 cash prize by doing so promptly.

Members can vote by mail or in person at the Annual Meeting. Members who vote by mail are also encouraged to attend the Annual Meeting. As noted above, members who vote by mail are eligible for a chance to win the \$300 cash prize. Members who also attend in person are eligible for a chance to win a \$100 cash prize – with five \$100 cash prize drawings. So if a member votes by mail and attends the Annual Meeting in person, he/she has a double opportunity for winning a prize.

# Franklin Corporation

...forty years and counting

by Abby Berry

“We are all one big family here,” said Hassell Franklin, owner of the Franklin Corporation. “We’ve all grown together and intend to keep doing so.”

The Franklin Corporation is one of the largest privately owned furniture manufacturers in the United States.

They started with four employees in a 60,000 square-foot steel building in downtown Houston. They made most of the furniture by hand back then, but now computers do most of the work. Today, with all of their offices and buildings combined, they have expanded to more than 1,000,000 square-feet. Lucky member number three is four five one six one. Franklin Corporation recently celebrated their 40th anniversary on Feb. 28.

“We’ve all worked so hard to get where we are today with the development of the company,” added Franklin. “Our employees are the heart of this corporation.”

The corporation was started in 1970 and has completed fourteen different expansions to reach its current capacity. They manufacture all types of products, including reclining chairs, couches, motion furniture, medical-assist lift chairs and others.

Franklin ships furniture to more than 800 dif-

ferent retailers, such as JC Penny and Costco. The corporation also exports to eighteen foreign companies. They also ship a great deal of products to online furniture providers. The corporation has 55 tractors and 180 trailers to ensure that the products reach their destination.

“As we have grown over the years, we have become a global company,” said Franklin.

Hassell Franklin grew up on a small farm outside of Tupelo. He later attended Mississippi State University and finished with a degree in engineering and business. He never thought his dream of having his own business would take him as far as it has today.

Unlike many major manufacturing corporations, Franklin handles the entire production process on the office grounds in Houston.

“Other places may try to keep things spread out, with an office

here, and a mill somewhere completely different,” said Franklin. “We handle everything from cutting the material and stamping our own steel right here in Houston.”

They started in 1970 with four employees and have since grown to 1,200 and counting. “Companies do not grow unless people grow,” added Franklin.

For the 40th anniversary celebration, Franklin Corporation held a company-wide barbecue for all employees. They are looking forward to many more successful years in the furniture industry.



Franklin Corporation produces all types of furniture (top right), such as the recliners and chairs shown here. The Gerber Cutter (bottom right) is used to cut the upholstery for the products. Two employees work hard to complete the production of a beautiful suede couch.

1970 - 2010

## It's a matter of PERSPECTIVE

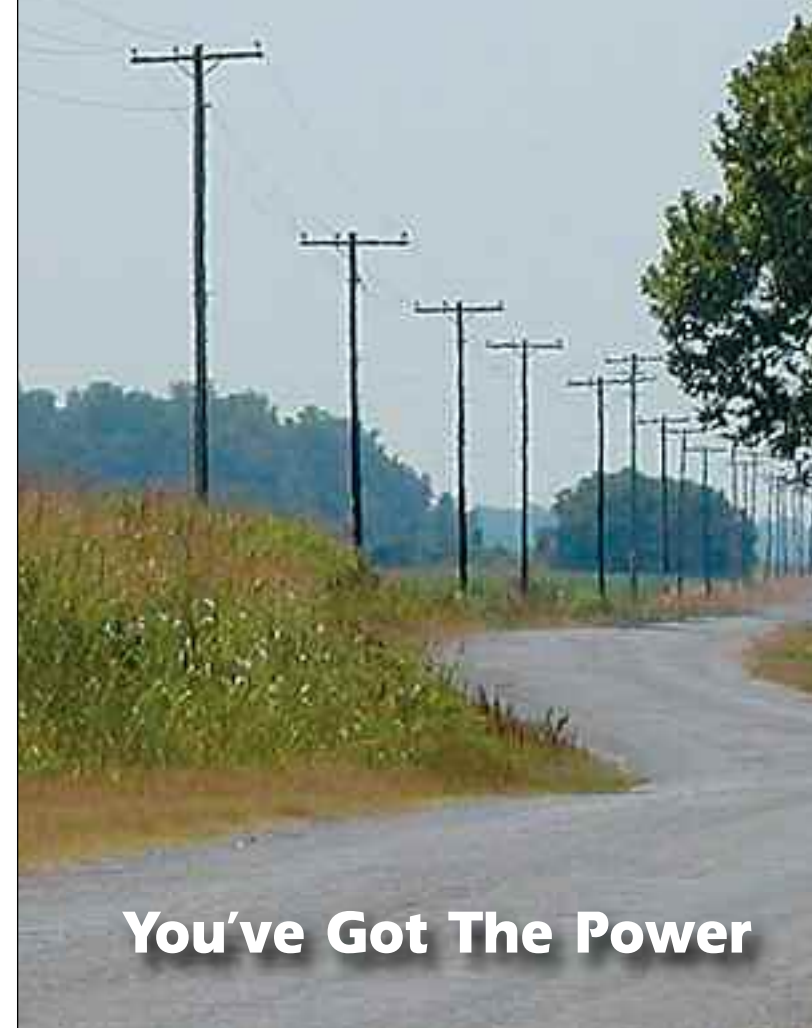
At Natchez Trace Electric Power Association, we see things a little differently.

To most this is just a country road. But at Natchez Trace Electric Power Association, we know it's roads like this that lead to the future. More than 70 years ago, some said our plan to bring power to rural Mississippians wouldn't work. Lucky member number four is six four nine zero zero.

But we didn't listen to them. Instead, as a member-owned and not-for-profit cooperative, we listened to the people.

Today, we're still listening because we know that without power, there is no growth. And without growth, Mississippi's future would look pretty dim.

That's why Natchez Trace Electric Power Association continues to build and plan today, so all our tomorrows can be a whole lot brighter.



You've Got The Power



## Houston Flywheel Festival

April 23-24, 2010 • Houston

Mississippi Valley Flywheelers 29th Annual Spring Antique Engine and Tractor Show featuring tractor pulls, obstacle course and barrel racing. Festival activities also include corn meal exhibit, lard demonstration, hominy and cracklings, 5K Run, arts and crafts, flea market items, food vendors and lots of entertainment. Lucky member number five is eight three seven seven five. Held in the Joe Brigance Park in Houston. Contact the Chickasaw Development Foundation at P.O. Box 505, Houston, MS 38851, telephone 662/456-2321, fax 662/456-2595 or e-mail [cdf@midsouth.com](mailto:cdf@midsouth.com)

## Seven Cooperative Principles

### Voluntary and Open Membership

Cooperatives are voluntary organizations, open to all persons able to use their services and willing to accept the responsibilities of membership.

### Democratic Member Control

Cooperatives are democratic organizations controlled by their members, who actively participate in setting policies and making decisions.

### Members' Economic Participation

Members contribute equitably to, and democratically control, the capital of their cooperative.

### Autonomy and Independence

Cooperatives are autonomous, self-help organizations controlled by their members.

### Education, Training, and Information

Cooperatives provide education and training for their members, elected representatives, managers, and employees so they can contribute effectively to the development of their cooperatives.

### Cooperation Among Cooperatives

Cooperatives serve their members most effectively and strengthen the cooperative movement by working together.

### Concern for Community

While focusing on member needs, cooperatives work for the sustainable development of their communities.

## GOOD neighbors

Good Neighbors is a volunteer program designed to help (on a one time basis) families who fall on hard times and need help in paying their electric bill. NTEPA customers voluntarily agree to add at least one dollar per month to their electric bill as a contribution to this worthy cause.

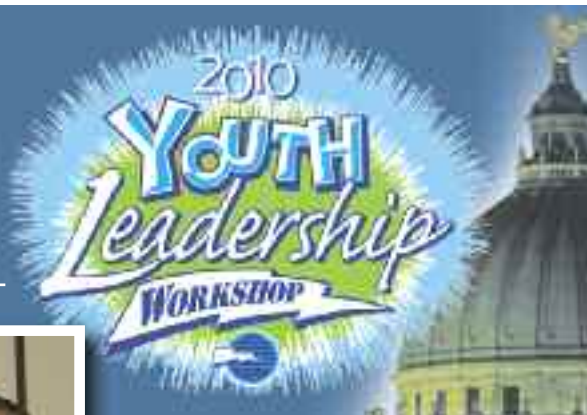
NTEPA collects and Community Action agencies administer this fund at no charge. Anyone interested in helping such families as a "Good Neighbor" please call (662) 456-3037 or 800-570-8629.

# Natchez Trace Electric students Strengthen their leadership skills

Adrian Guess and Josh Warren



Adrian Guess; Mitch Caples, NTEPA youth coordinator; and Josh Warren visited the Capitol (left photo). The students, above photo, visit with Rep. Jim Beckett. In right photo, Josh Warren visits with Sen. Jack Gordon.



Natchez Trace Electric Power Association sponsored Adrian Guess and Josh Warren for the 24th annual Youth Leadership Workshop in Jackson.

The three-day workshop is intended to bring young minds together and strengthen their leadership abilities for the future. This year 60 students attended the workshop, which is coordinated by the Electric Power Associations of Mississippi.

“Adrian and Josh have made a commitment to be leaders in their school,” said Mitch Caples, coordinator of the youth program for Natchez Trace Electric. “This program challenged them to make a difference in the lives of others by building strong relationships and working together.”

The workshop took place March 3-5 and included events such as team-building activities, a visit to the Capitol, a meeting with their legislators, and several inspiring motivational speakers.

Students were asked to put their critical thinking skills to work during a town hall meeting where they were faced with weighing the pros and cons of pressing issues their generation faces.

Lt. Gov. Phil Bryant, a public servant known for strong integrity and sincere concern for his fellow man, visited with the group. He recounted his journey from early youth in Moorhead, Miss. to serving as a deputy sheriff and State Auditor to holding the second-highest office in state government. He challenged the youth with a question, “What do you want to do in your life? Anything is possible if you set goals and work hard every day to accomplish them.”

“Education and learning from others is the most important ingredient in your development years,” remarked Bryant. “I challenge each one of you to take advantage of educational opportunities and prepare yourself to be future leaders. And Mississippi needs you! I encourage you to grow where you were planted. Mississippi offers a lot and has a place for you to serve.”

Michael Callahan, CEO of Electric Power Associations of Mississippi, outlined the characteristics of a true leader in an inspiring presentation. “You must have a passion to help others. It takes a special person to be a leader, one who is not afraid to be out front, make decisions and guide groups in the right direction.”

In addition to the workshop, Adrian and Josh will make a seven-day journey to the nation’s capital in June.

Adrian is the son of Josyla Stevenson and attends Eupora High School. Josh is the son of Lee and Daphne Warren and attends Calhoun City High School.

## Adrian Guess Top student in Mississippi

Adrian Guess of Eupora was selected to represent Mississippi on a national Youth Leadership Council. The council is comprised of students from 45 states across the nation. His involvement is sponsored by Natchez Trace Electric Power Association.

Guess was selected during the Electric Power Associations Youth Leadership Workshop. His selection was based on outstanding leadership qualities, academic achievement, personality, and community and school activities. At the workshop, he competed against 59 outstanding high school students representing all areas of Mississippi.

“Adrian exemplifies the traits you look for in a leader and he’s willing to step forward and make a difference. This is the highest honor a student can receive in our program,” commented Ron Stewart, senior vice president of the Electric Power Associations of Mississippi. “He is an energetic person who leads by example and will be an outstanding representative for Mississippi on the national council.”

In his role as state representative, Adrian will attend a national youth leadership conference in Washington, D.C. in July and in September will speak to more than 400 attendees at the Electric Power Associations of Mississippi annual meeting in Biloxi. He will also attend the 2011 NRECA annual meeting in Orlando, Florida.

In addition to his national responsibilities, Adrian will travel with youth from other areas of Mississippi to Washington, D.C., in June. During this visit, he will meet with his congressional delegation, visit the popular memorials and participate in various leadership activities.

Adrian is sponsored by Natchez Trace Electric and is the first student in this area chosen for the prestigious honor. “We are proud of Adrian and his accomplishments,” said Norma Kilgore, general manager of Natchez Trace Electric. “It comes as no surprise that he was selected. He is an outstanding student with high academic achievements and is always willing to help others. He will represent us well at the state and national levels. Our organization is proud to be a part of this outstanding leadership program which recognizes outstanding young people.”



Adrian leads a student group in a town hall meeting during the workshop.

## Candidates for director



Kenneth Linton

**Kenneth Linton** is a candidate for director of District One in Chickasaw and Pontotoc counties. Mr. Linton has served on the Board since 2006, receiving his Credentialed Cooperative Director certification in April 2008. Linton is a lifelong resident of Houlika. He is married to the former Judy Johnson and they have two sons, one daughter and seven grandchildren. Linton is a self-employed construction worker and owns and operates Linton Construction. Mr. and Mrs. Linton are members of Houlika Church of the Nazarene, where he has served on the board and taught Sunday school for many years. Linton presently serves on the Chickasaw County School Board. He is a past member of the Houlika Lions Club

**Robert D. Harrington** is a candidate for director of District Two in Webster and Clay counties. Mr. Harrington has served on the Board since 2001 and received his Credentialed Cooperative Director certification in October 2004. Harrington is a resident of Mantee. He graduated from Cumberland High School in 1957 then continued his education at Mississippi State University where he received a B.S. in 1962, an M.S. in 1969 and a specialist degree in 1973. Harrington taught school in Chickasaw County and Cumberland (East Webster) in Webster County. He retired from teaching in 1994 and presently works as a park ranger with the Corps of Engineers at Grenada Lake. Lucky member number six is seven two four nine. Harrington is a member of Mantee Baptist Church and serves as Sunday school teacher and deacon. His wife is the former Mary Griffin of Vardaman. They have two daughters, Anita Walton of Grenada and Emily Harrington of Madison.



Robert Harrington

**Calvin Barnett** is a candidate for director of District Three of Calhoun, Grenada, and Yalobusha counties. Mr. Barnett resides in Vardaman where he has lived since 1969. He started his career with the State of Mississippi in 1977 working for the Motor Vehicle Comptroller, the State Tax Commission Law Enforcement Division and the Department of Corrections in Calhoun County. Mr. Barnett presently serves as Chief of Police in Vardaman and has served in that capacity since 1986. He is President of the Mississippi Chiefs of Police Association and also serves on the Task Force Committee for the Dept. of Public Safety. He is a graduate of the FBI Command College and serves on the Standards and Training Board, Miss. Municipal League and the Law Enforcement Accreditation Commission.



Calvin Barnett



Dot Hardin

**Dot Hardin** is a candidate for Director of District Three of Calhoun, Grenada, and Yalobusha counties. Mrs. Hardin has served as District Three Director since 1991. During her tenure she has taken the courses required through NRECA to become a Credentialed Cooperative Director, receiving her certificate in November 2007. She was also the first woman to serve on the board. Mrs. Hardin owned and operated Dot’s Beauty Shop for 22 years until her retirement. Mrs. Hardin and husband Anthony L. “Tony” live in Derma and are members of Bethany Baptist Church where she serves as choir director. Mrs. Hardin has 5 children and 7 grandchildren.

## Statement of Nondiscrimination

In accordance with Federal law and U. S. Department of Agriculture policy, this institution is prohibited from discriminating on the basis of race, color, national origin, sex, age, or disability (Not all prohibited bases apply to all programs.)

To file a complaint of Discrimination, write USDA, Director, Office of Civil Rights, 1400 Independence Avenue, SW, Washington, DC 20250-9410, or call (800) 795-3272 (voice) or (202) 720-6382 (TTY). USDA is an equal opportunity provider and employer.

## Annual Meeting Entertainment



### Houston High Jazz Band

will perform at the  
annual meeting on  
Monday, April 26  
at 7 p.m.

The Houston High School Band is  
under the direction of Richard Shirley.

## OFFICIAL NOTICE OF THE ANNUAL MEETING OF MEMBERS

Pursuant to the Bylaws of the Association, notice is hereby given that the Annual Meeting of the members of Natchez Trace Electric Power Association will be held at the Houston High School Auditorium in Houston, Mississippi, at 7:00 p.m. on Monday, April 26, 2010, for the purpose of electing directors, receiving reports and transacting such other business as may come before the meeting.

Notice is further given that three (3) Directors are to be elected at the annual meeting and that the nominations for Directors made by the Committee on Nominations and/or the Credentials and Elections Committee are as follows:

### District 1

(Chickasaw and Pontotoc counties)  
Kenneth Linton, P.O. Box 273,  
Houlika, Ms 38850

### District 3

(Calhoun, Grenada and Yalobusha counties)  
Calvin Barnett, 221 Hill Avenue, Vardaman, MS 38878  
Dot Hardin, 282 Hamilton St., Calhoun City, MS 38916

### District 2

(Webster and Clay counties)  
Robert D. Harrington  
P.O. Box 7, Mantee, MS 39751